

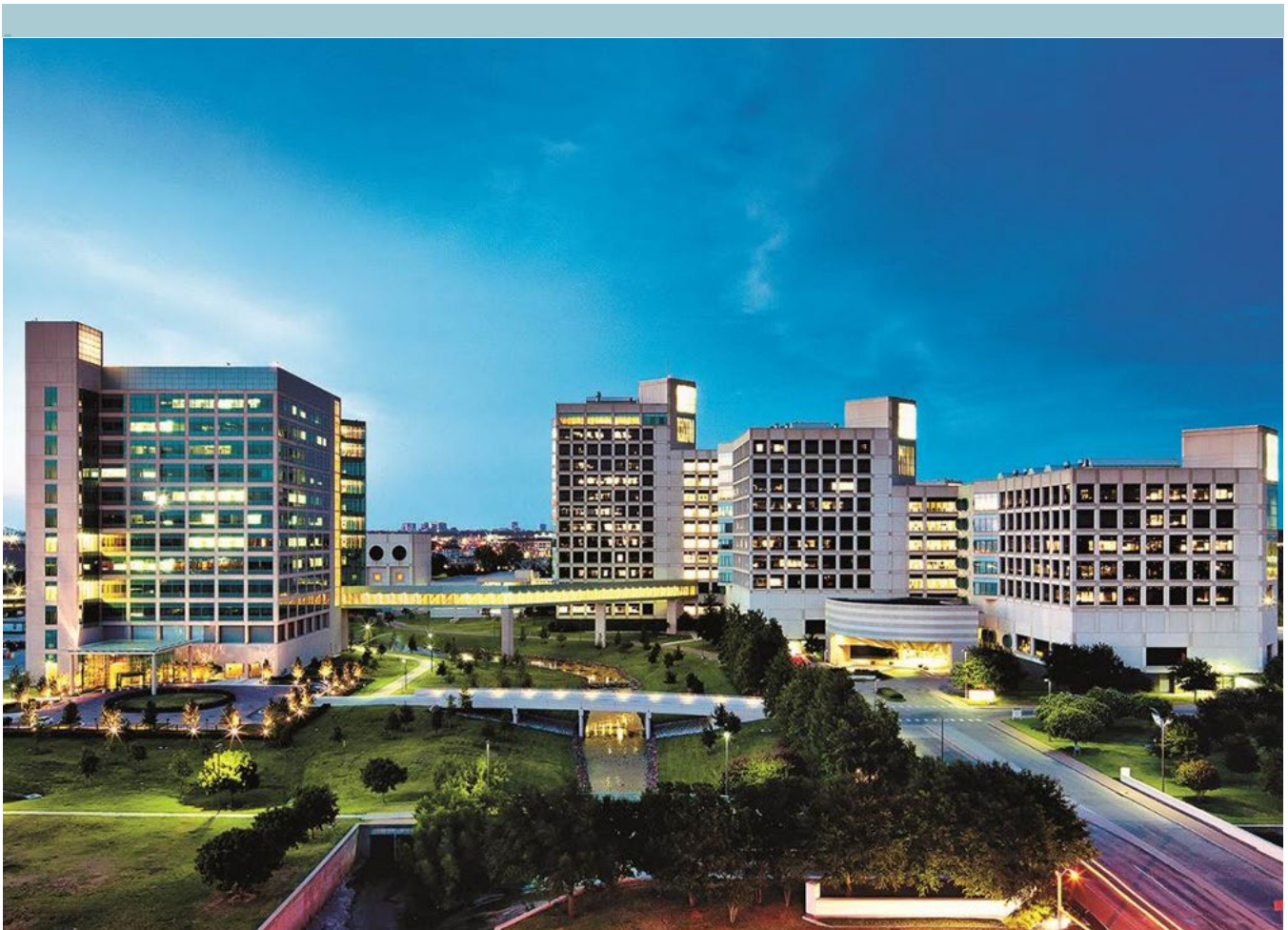
UT Southwestern Medical Center

Division Chief, Child and Adolescent Psychiatry

Leadership Profile

May 2026

Prepared by Jeff Schroetlin, Megan Welch, and Lyndsey Nicodem



WittKieffer

Contents

The Opportunity	1
Organization Overview	2
Position Summary	8
Candidate Qualifications	10
The Community	11
Procedure for Candidacy	13

The Opportunity

University of Texas Southwestern Medical Center (UTSW) seeks an accomplished leader and scientist to serve as Division Chief, Child and Adolescent Psychiatry for the [Department of Psychiatry](#). The Division Chief will have the opportunity to significantly build upon the research and academic programs for the Division while helping to ensure outstanding mental healthcare for the children of one of the nation's fastest growing regions.

It is an exciting time at UTSW and the Department of Psychiatry, with the leadership of internationally recognized Chair, Dr. Tarek Rajji, and the building of the new 292-bed psychiatric hospital, [the Texas Behavioral Health Center](#). With combined funding of \$482.5 million from the Texas legislature, the hospital will be opening this summer and will be comprised of 200 adult beds and 92 pediatric beds. Children's Health is the only state psychiatric hospital on the campus of an academic medical center in Texas. This new facility will give the Division and Department greater opportunities to support and serve populations suffering from mental illness in the Dallas-Fort Worth metroplex. Additionally, the State of Texas supports specialized programs for child mental health through the [Texas Child Mental Health Care Consortium](#).

The Division Chief will develop and foster a vision for the Division for the coming years, with a strong focus on developing a robust research portfolio, emphasizing grant funding, scholarly output, and high-impact journal publications. This role involves fostering an exceptional teaching environment and continuously advancing the medical education curriculum and training programs while continuing to recruit, train, and retain faculty to grow the Division. The Division Chief will partner with the Chief of Service within the Division to continue building statewide and national relationships for the Department and their clinical partners.

The Division is comprised of 78 faculty, of which 31 are psychiatrists and 47 are clinical psychologists with a secondary appointment in the Division of Child and Adolescent Psychiatry and includes both a residency (combined 5-year program) and fellowship program. The Department's more than 300 faculty have expertise in virtually all areas pertinent to modern psychiatric practice, ranging from psychoanalysis to neurobiology to psychiatric epidemiology, and boasts a robust program in psychiatric neuroscience, neuromodulation-based interventional psychiatry, and depression research. The Department is one of four clinical departments affiliated with the [Peter O'Donnell Jr. Brain Institute](#), an internationally recognized academic institution housed within UTSW and renowned for its research, medical education, and patient care in treating major forms of brain and spine diseases.

UT Southwestern Medical Center is one of the premier academic medical centers in the nation, especially well-known for the quality of its science, outstanding clinical care, and fundamental commitment to integrating pioneering biomedical research with clinical care and education. The medical center's faculty includes many distinguished scientists, of which 26 are members of the National Academy of Sciences, 18 are members of the National Academy of Medicine, and 14 are Howard Hughes Medical Institute investigators. Since 1985, six members of the UTSW faculty have been recipients of Nobel Prizes.

The ideal candidate will be an active clinical researcher with a strong record in translational research, a proven ability to lead in a complex, matrixed academic enterprise, and demonstrated scholarly achievement of national recognition. Applicants must have an MD/DO with board certification in Child and Adolescent Psychiatry and be eligible for appointment as an associate or full professor. Outstanding PhD or PsyD candidates will also be considered.

Organization Overview

Department of Psychiatry

Under the leadership of Department Chair Tarek K. Rajji, M.D., the Department is comprised of more than 300 faculty, including psychiatrists and psychologists. The Department of Psychiatry's vision is to meet the behavioral health needs of diverse communities across North Texas and beyond by increasing equitable access to psychiatric care and the latest advancements in neuroscience and psychiatry and by preparing an effective workforce to achieve these objectives.

With its large, unmatched faculty, the Department of Psychiatry at UT Southwestern Medical Center benefits from expertise in nearly all areas pertinent to modern psychiatric practice, ranging from psychoanalysis to neurobiology to psychiatric epidemiology. This expertise includes areas rarely found in psychiatry departments, such as medical ethics, health economics, family systems studies, psychotherapy research, neurogenesis, and psychoneuroendocrinology. This breadth of experience and expertise is the foundation for the three-part goal of providing excellence in clinical care, conducting groundbreaking translational research, and training tomorrow's leading psychiatry practitioners.

Patient Care

Psychiatry services at UT Southwestern are provided for a highly diverse patient population at multiple locations, including programs at UT Southwestern University Hospitals, Parkland Hospital, the Dallas Veterans Administration Medical Center, Texas Health Presbyterian Hospital Dallas, the UT Dallas Student Mental Health Center, Children's Medical Center, Terrell State Hospital, and Metrocare Services at The Bridge, a multipurpose facility dedicated to serving unhoused individuals, as well as outpatient and specialty clinics in the community. The Department also collaborates with several local community agencies to provide expanded care for the greater Dallas-Fort Worth area.

Education

The Department's educational programs give medical students, residents, fellows, and clinical psychology students the opportunity to participate in patient care in an array of settings that reflect all the economic, racial, and ethnic diversity of Dallas, as well as the full range of psychiatric diagnoses. The Department's Research Track for psychiatry residents is supported by four National Institutes of Health grants.

Residency Training

- General Psychiatry Residency
- Internal Medicine-Psychiatry Combined Residency
- Neurology-Psychiatry Combined Residency
- Triple Board Program
- Child and Adult Psychiatry Combined Track
- Research Track
- Rural and Public Mental Health Track

Fellowships

- Addiction Psychiatry
- Child and Adolescent Psychiatry
- Consultant-Liaison Psychiatry
- Forensic Psychiatry
- Geriatric Psychiatry
- Women's Mental Health
- Advanced Practice
- Social Work

Research

The Department's work in the neuroendocrinology of mood, brain imaging of addictive disorders, the neurobiology of sleep and appetite, and the cognitive neuroscience of stress produces a picture of disorders and treatments that spans psychiatry's disparate domains.

Clinical Research

The Department engages in a broad range of clinical research studies in psychiatry and psychology, comprising diverse approaches such as brain imaging, interventional psychiatry, investigations of neurobiological and neuroendocrine processes, pharmacology, and psychotherapeutic treatments. Additionally, the Department's intervention and services research examines which treatments and in which order or combination are safe, effective, or indicated for various mental disorders, including studies to establish which policies, practices, or procedures are most cost-effective or produce the best outcomes.

Psychiatry Neuroscience

The Department studies the basic neurobiology underlying mental illness and promotes translation of basic research findings into novel approaches for therapeutic treatment of people with mental illness. Research encompasses the fundamental processes controlling brain function at the molecular, genetic, and cellular levels, focusing on abnormalities in various neuropsychiatric disorders. Current studies are investigating:

- How alterations in genes, gene expression, signal transduction pathways, and neuroplasticity contribute to mental illness, including schizophrenia, autism, depression, anxiety, and addiction.
- How brain circuit-specific pathways regulate complex behavior, including learning, memory, mood, and motivation.

Studies make prominent use of transgenic mouse models, viral mediated gene transfer, DNA/RNA profiling, protein biochemistry, and optogenetics and integrate molecular-, cellular-, and systems-level investigation with sophisticated animal models of specific disorders.

Center for Depression Research and Clinical Care

The [Center for Depression Research and Clinical Care](#) (CDRC) is a nationally recognized Center of Excellence (CoE) in the research and treatment of mood disorders, including depression and bipolar disorder. Built on a quarter-century of research in mood disorders, CDRC was established in 2015 to realize a future free from the burden of depression. Since its founding, the CDRC has demonstrated its impact in lives changed. CDRC has led research into new treatments, including brain and blood tests, for depression and suicide and has established evidence-based programs that have transformed the ability to prevent, diagnose, and treat depression. Critically, the Center's faculty and staff have built networks and established research-driven programs that have extended reach to adolescents, addressing youth depression and suicide with mental health promotion and resilience training that encourages a conversation long overdue.

As part of the Center, The Pediatric Mood Disorder Network was established in 2017 with the goal of collaborating with clinical and community members to address gaps in the treatment of depression. Since the establishment of the pediatric network, the Center has served more than 10,000 children and adolescents. Partnering with clinical and community members, the Center seeks to address gaps in the screening, diagnosis, treatment, and management of depression and other mood disorders.

Additionally, The Risk and Resilience Network partners with local schools, colleges, youth groups, and community organizations to provide educational programming aimed at preventing depression. With several initiatives, including resilience training and mental health education programs, the goal is to teach strategies and techniques

that raise awareness about mental health and increase mental health resilience. Programs available through the Risk and Resilience Network (RRN) allow adolescents to learn and develop life-long coping and resilience skills, which are shown to help teens and young adults avoid high-risk and self-destructive behaviors that can lead to poor academic achievement, substance abuse, more severe psychiatric conditions, and suicide.

The Peter O'Donnell Jr. Brain Institute

The Peter O'Donnell Brain Institute serves as a powerful integrating force to help the Department of Psychiatry work closely with other clinicians and researchers across the University, blending techniques and discoveries in basic science and medical care to better understand the causes of mental illness and to develop improved treatments and preventive strategies.

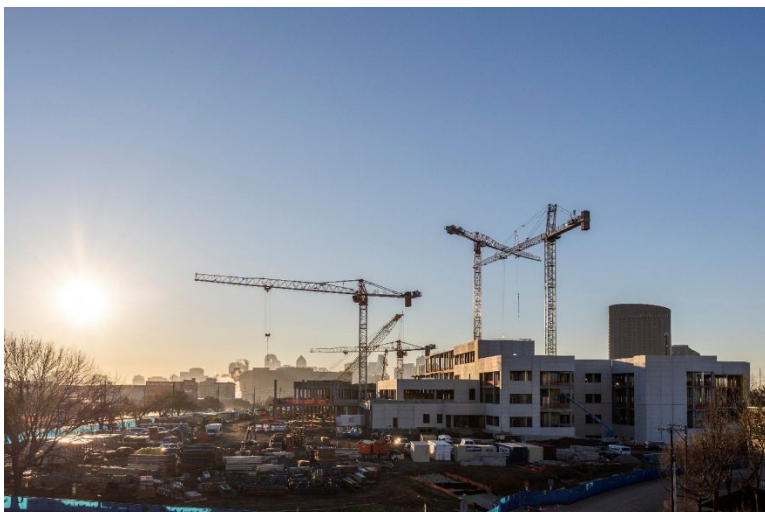
Established in 2015 with a generous donation from Edith and Peter O'Donnell Jr., The Peter O'Donnell Jr. Brain Institute housed within UT Southwestern Medical Center is supported by a [\\$1 billion campaign](#) that fuels its commitment to advance brain research and clinical care. With over 2,100 faculty and staff, the Institute seeks to tackle the brain's most complex problems. The Institute supports multidisciplinary approaches through a variety of grant and scholar programs that provide funding, mentoring, education, and tools for researchers at all levels.

The Peter O'Donnell Jr. Brain Institute recognizes that, in order to solve the most challenging brain diseases, work must be multidisciplinary. The Institute integrates and leverages the strengths of multiple independent departments, centers, and divisions at UT Southwestern Medical Center. By bringing together clinical and basic researchers in a comprehensive unit, the Institute fosters collaboration and provides resources that set the stage for progress and discovery in working toward the vision of a future without brain disease.

Division of Child and Adolescent Psychiatry

The Division of Child and Adolescent Psychiatry consists of 31 psychiatrists and 47 clinical psychologists (secondary appointment in the Division of Child and Adolescent Psychiatry) and includes both a combined 5-year residency program and a fellowship program. The State of Texas supports specialized programs for child mental health through the [Texas Child Mental Health Care Consortium](#). With programs delivered at Health-Related Institutions around the state, including UT Southwestern Medical Center, the aim of the Consortium is to leverage the expertise and capacity of the health-related institutions of higher education in the state to address mental health challenges and improve the mental health care system for children and adolescents.

The Texas Health and Human Services Commission is partnering with UT Southwestern Medical Center to build the [Texas Behavioral Health Center at UT Southwestern](#). This new 292-bed psychiatric hospital will combine the



expertise of both organizations as well as community stakeholders to provide state-of-the-art mental health care for our region. The facility is slated to open this summer with 200 adult beds and 92 pediatric beds, making it among the largest inpatient pediatric psychiatry hospitals in the country.

Additionally, the Division collaborates with multiple specialized institutes and centers based at UT Southwestern Medical Center and Children's Health, including the UT Southwestern and Children's Health Center for Autism Care, the Peter O'Donnell Jr. Brain Institute, and the Center for Depression Research and Clinical Care.

UT Southwestern and Children's HealthSM Center for Autism Care

The [UT Southwestern and Children's HealthSM Center for Autism Care](#) offers a comprehensive evaluation of patients' cognitive, adaptive, social, and communication skills, providing the most advanced treatment plans for patients with autism. The Center for Autism Care is a joint program between UT Southwestern and Children's Medical Center comprised of 12 UT Southwestern faculty members and supported by a dedicated team of 30 Children's Health staff, including a clinic director. The clinical service brings together health professionals from both medical centers who evaluate and treat autism and other developmental disabilities. Providers work alongside leading scientists, using innovative approaches for understanding and treating neurodevelopmental disorders. The Center delivers state-of-the-art medical care for autism and other neurodevelopmental disabilities, including initial diagnostic evaluations and treatment planning, behavioral intervention for recently diagnosed children, treatment services by neurology providers, and psychiatric consultation for children and adolescents.

A major focus of the Center's mission is advancing clinical and translational research to uncover the causes of autism and develop treatments. The Center's research initiatives have funding from organizations such as the National Institute of Mental Health (NIMH), the Eunice Kennedy Shriver National Institute of Child Health and Human Development (NICHD), Autism Speaks, the Department of Defense, and the Once Upon A Time Foundation.

The program includes one of only six [Neurodevelopmental Disabilities](#) residencies in the country, a postdoctoral fellowship, a parent education series, and a parent support group, all of which provide a rich environment for clinical research and care. The Center draws patients from across Texas and surrounding states and is equipped to support even the most challenging cases.

A search is currently underway to find the Center for Autism Care's inaugural Director.

UT Southwestern Medical Center

UT Southwestern Medical Center is situated on a 1,000-plus-acre research campus located 10 minutes from downtown Dallas in the city's Southwestern Medical District. Since its formation in 1943, UT Southwestern has evolved from a small wartime medical college into a thriving academic medical center with an international reputation for exemplary research, robust educational and training programs, and a rapidly expanding clinical enterprise dedicated to excellence in care. UT Southwestern incorporates four degree-granting institutions: UT Southwestern Medical School, UT Southwestern Graduate School of Biomedical Sciences, UT Southwestern School of Health Professions, and the Peter O'Donnell Jr. School of Public Health.



The schools train approximately 2,400 medical, graduate, and health profession students, residents, and postdoctoral fellows each year. Additionally, 143 early career researchers have come through the Medical Center's acclaimed Endowed Scholars Program in Medical Science, and many have gone on to become leaders in their fields.

UT Southwestern Medical School

UT Southwestern Medical School is one of six medical schools in the University of Texas System and one of the nation's top medical schools. It graduates about 230 students each year, making it one of the largest medical

schools in the country. Guided by its core mission of educating and training the next generation of physicians and to ensure that UTSW students are fully prepared for the future they will encounter in the rapidly changing landscape of medicine and healthcare delivery, the Medical School launched a new curriculum in the Fall of 2015. The new curriculum is characterized by a focus on team-based learning, close contact with faculty, meaningful mentorship opportunities, and integrating basic science education with patient care training and experience.

The Medical Scientist Training Program (MSTP) prepares students seeking both M.D. and Ph.D. degrees for careers in fields like biomedical research, as well as the application of research discoveries to the practice of medicine.

As one of the world's foremost research institutions, UT Southwestern fosters "no-fence" multidisciplinary research and rigorous scientific training in both basic and clinical research. With a superb international reputation for life-changing research that has led to some of the most important discoveries of this generation, UT Southwestern's researchers make a real difference.

UT Southwestern is home to many nationally and internationally recognized physicians and scientists, including six Nobel Laureates since 1985, 25 members of the National Academy of Sciences, and 23 members of the National Academy of Medicine (formerly the Institute of Medicine), a highly esteemed component of the NAS. UT Southwestern is also home to 13 Howard Hughes Medical Institute (HHMI) Investigators and, as faculty members in basic science departments, their recognized leadership is an important source of the organization's strengths in biomedical research. Faculty members' investigations, ranging from the microscopic level to patient care as a whole, continue to bring about notable discoveries, important educational opportunities, and advanced treatment options for improved health care. Since UT Southwestern's inception, research has been the cornerstone upon which outstanding medical education and patient care have risen. The discoveries of UT Southwestern's faculty and other teams have transformed science and medicine and set a standard of scientific excellence. The example set by the Nobel Laureates and other leading faculty has also helped establish a well-entrenched culture of collaboration and collegiality, making UT Southwestern a very special academic environment.

UT Southwestern Research

Research is the cornerstone upon which world-class medical education and patient care are built. Investigations into cancer, neuroscience, heart disease, stroke, arthritis, diabetes, and many other fields keep UT Southwestern at the forefront of medical progress.

The Harold C. Simmons Comprehensive Cancer Center was designated by the National Cancer Institute (NCI) in 2015 as a comprehensive center, an elite distinction held only by top-tier cancer centers nationwide. The Simmons Cancer Center is the only cancer center in North Texas to attain this prestigious status, which is bestowed by the NCI in recognition of innovative research and excellence in patient care.

The Peter O'Donnell Jr. Brain Institute has been launched at UT Southwestern, a recognized leader in neuroscience and behavioral health. A \$36 million gift from the O'Donnell Foundation created this new Institute, where scientists use the most sophisticated equipment and techniques available to advance knowledge about the fundamental mechanisms of brain function, and physicians provide the very best in innovative clinical care possible today to patients and families faced with devastating brain diseases.

The Texas Institute for Brain Injury and Repair, a component within the O'Donnell Brain Institute, focuses on the Medical Center's strengths in basic and translational research on various types of brain injury and conditions, including traumatic brain injury (TBI), stroke, and Alzheimer's disease. The Institute also promotes brain injury education and prevention.

UT Southwestern's Hamon Center for Regenerative Science and Medicine is advancing human health through discoveries of the fundamental mechanisms of tissue formation and repair and the use of this knowledge to develop transformative strategies and medications to enhance tissue regeneration.

The Lyda Hill Department of Bioinformatics is driving innovation in science and patient care by analyzing massive data sets and supporting the computational needs of researchers and clinicians on campus who are addressing scientific and medical challenges.

UTSW Patient Care

The vitality of the UT Southwestern Health System and Medical Group is evident in the growth of its faculty and outstanding clinical programs, the emphasis on continuous quality improvement, the steady expansion of its facilities, its increasing regional and national footprint, and its maturing population health capabilities.

Faculty and residents provide care to more than 120,000 hospitalized patients and oversee approximately 5 million outpatient visits annually. As members of the UT Southwestern Medical Group, UT Southwestern faculty physicians provide patient care at UT Southwestern University Hospitals & Clinics (including Clements University Hospital and the Zale Lipshy Pavilion), which are owned and operated by the University itself and at its partners such as Parkland Health & Hospital System, Children's Medical Center, Texas Scottish Rite Hospital for Children, VA North Texas Health Care System, and other affiliated hospitals and community clinics whose operations are controlled independently of the University.

UT Southwestern's William P. Clements Jr. University Hospital opened in December 2014 and recently expanded with the addition of a third tower completed in December 2020, bringing the total number of beds to 751. Clements University Hospital has transformed opportunities for medical care in North Texas and beyond and is nationally recognized for innovation in its design and operations that focus on patient experience and emphasize the integration of education, research, and patient care. Clements University Hospital is a centerpiece for carrying out UT Southwestern's tripartite mission to educate, discover, and heal. Innovations in technology and approaches to care abound in the new Hospital. It is a place where the intellect, skill, and science of UT Southwestern are translated into the delivery of compassionate, high-quality, and innovative patient care. With the growth of patient volumes far outpacing projections since the Hospital opened, construction to expand the hospital was completed several years sooner than originally anticipated.

UT Southwestern is the top hospital in the Dallas-Fort Worth area, the nation's fourth-largest metro, and ranks among the top 50 hospitals nationally in 10 specialties ranging from brain to heart care, according to U.S. News & World Report's annual Best Hospitals report (2020); six of the specialties rank among the top 25 in the nation.

In its earlier history, UT Southwestern's clinical mission was almost entirely carried out through patient care at Parkland Memorial Hospital, the Dallas County safety net hospital, which opened its own 862-bed new replacement hospital in 2015. Parkland remains a vital and important partner, and the volume of care provided by UT Southwestern Medical Group physicians continues to increase.

Children's Medical Center remains the primary clinical site for the UT Southwestern Pediatric Group. Children's Health is the premier academic pediatric system in the region. With two hospitals and 10 outpatient facilities, Children's Health maintains 559 licensed beds and receives more than 300,000 ambulatory visits per year.

Over the past several years, much of UT Southwestern's planning has been predicated on the assumption that a transition from "volume to value" is both right from a societal perspective and highly likely to happen as a confluence of forces drives change in that direction. UT Southwestern has made very significant advances to prepare for and thrive in that future environment. UT Southwestern has successfully participated in the Medicare Shared Savings Program for several years, consistently ranking among the top 10 of approximately 360 participating ACOs.

Position Summary

Reporting to the Department Chair, Tarek K. Rajji, M.D., the Division Chief, Child and Adolescent Psychiatry ("Division Chief"), will lead the Division in developing a robust research portfolio, emphasizing grant funding, scholarly output, and high-impact journal publications. The Division Chief will additionally be responsible for professional practice, development, and mentorship within the Division and for education within the subspecialty. The Division Chief will work on Divisional initiatives alongside the Chief of Service, who will focus on service efficiency and productivity for the Division.

This role involves fostering an exceptional teaching environment and continuously advancing the Division's medical education curriculum and training programs. Additionally, this leader will prioritize recruiting, training, developing, and retaining world-class faculty to advance the growth strategies within both the Division and the Department. Maintaining a collaborative and transparent atmosphere, the Division Chief will further develop existing programs and identify new opportunities for growth.

Responsibilities

Supervision

- Lead and supervise 31 psychiatrists and collaboration with the Chief of Psychology Division, 47 Child Psychologists. Supervisory activities include recruiting, hiring, scheduling, training, performance evaluation, promotion, counseling, and disciplining in accordance with organizational policies and applicable legal guidelines.
- Promotes a positive working relationship with and among faculty to ensure they perform their responsibilities in a manner that fosters superior service to UT Southwestern and its associated hospitals and clinics.

Administration

- Support Department strategic plan and initiatives.
- Manage the Division's "all funds" financial performance, including all expenditures within the span of control.
- Lead the development of and approve "all funds" budget for the Division with support from Department administration.
- Maintain fiscal solvency of the Division.
- Present progress reports, including business development and financial performance, at regularly scheduled Executive Leadership Team (ELT) meetings.
- Provide leadership and oversight to Divisional employees.
- Hold Divisional faculty meetings at least once a month and one-on-one faculty meetings at least quarterly.

Academic

- Maintain and enhance Graduate Medical Education (GME) training programs in the Division, working closely with the Vice Chair of Education.
- Mentor junior faculty in clinical, academic, and research pursuits. Conduct annual evaluations.

Research

- Lead research activities of the Division, including programs, projects, and budgets.
- Mentor junior faculty in research activities.
- Monitor fiscal activity and budget with Department administration.
- Provide guidance and oversight of research activities in collaboration with the Vice Chair of Clinical Research.
- Undertake a systemic review of the research enterprise and develop a plan to enhance and expand research operations.

Candidate Qualifications

The ideal candidate will be an active researcher with a strong record in clinical or translational research, a proven ability to lead in a complex, matrixed academic enterprise, and demonstrated scholarly achievement of national recognition. Applicants must have an MD/DO with board certification in Child and Adolescent Psychiatry and be eligible for appointment as an associate or full professor. Outstanding PhD or PsyD candidates will also be considered.

Education and Certification

- MD/DO, PhD, or PsyD (or equivalent) from an accredited medical school is required.
- Board Certification in Child and Adolescent Psychiatry when applicable.
- Must qualify for a Texas medical license.
- A strong track record of scholarly achievement, including publications and external research funding.
- Nationally recognized as a leader in the field of Child and Adolescent Psychiatry with an outstanding track record of accomplishment in clinical care, research, and education.

Knowledge and Work Experience

- Experience building and supporting clinical and research programs and promoting academic and clinical excellence.
- Demonstrated success in faculty recruitment, mentoring, and development across clinical faculty, clinician-scientists, and staff.
- Experience advancing the education mission related to residency training and programs. Advanced training or certification in health care management is preferred.

Leadership Skills and Competencies

- Demonstrated administrative and leadership experience in academic medicine, with an ability to build and expand upon a strong foundation.
- Must be highly organized with strong leadership skills, administrative dexterity, and a demonstrated ability to create and lead within a complex, matrixed, and evolving environment.
- Demonstrated ethical conduct, professionalism, interpersonal skills, organizational skills, and management abilities to effectively direct and develop academic physicians.

The Community

Dallas, Texas

Dallas was founded in 1841 and formally incorporated in February 1856. It is the third-largest city in the state of Texas and the ninth-largest city in the United States. The city covers 342.5 square miles, not including water area, and is the county seat of Dallas County. It is the main economic center of the 11-county Dallas-Fort Worth metropolitan area. At over 7.5 million people, it is the fourth-largest metropolitan area in the United States. The metroplex also includes areas such as Plano, Grand Prairie, Arlington, Irving, Lewisville, and Flower Mound.



Dallas is the Southwest's leading business and financial center. It boasts the largest wholesale market in the world and lays claim to being one of the top convention cities in the United States and the No. 1 visitor destination in Texas. Dallas is considered one of the most livable cities in America. Residents enjoy a flourishing economy, arts and culture, abundant housing options, endless entertainment and activities, and a thriving community spirit.

The communities surrounding Dallas-Fort Worth have experienced unprecedented business growth and population expansion during the last ten years, and that growth continues. Dallas has developed a strong

industrial and financial sector and a major inland port due largely to the presence of Dallas-Fort Worth International Airport, one of the largest and busiest airports in the world. The Dallas-Fort Worth area is home to corporate headquarters for Texas Instruments, AT&T, American Airlines, Southwest Airlines, ExxonMobil, Bell Helicopter, BNSF Railway, GM Financial, Alcon, Tenet Healthcare, Kimberly-Clark, 7-Eleven, and Charles Schwab.

The city is sometimes referred to as the heart of "Silicon Prairie" because of a high concentration of telecommunications companies in the region, the epicenter of which lies along the Telecom Corridor in Richardson, a northern suburb of Dallas. Companies with a Telecom Corridor presence include Texas Instruments, AT&T, Ericsson, Fujitsu, Nokia, Collins Aerospace, Cisco Systems, and Verizon. Texas Instruments, a major manufacturer, employs 10,400 people at its corporate headquarters and chip plants in Dallas.

Significant national headquarters relocations to the area, including Toyota's North American headquarters, significant expansions of regional offices for a variety of corporations, and company relocations to downtown Dallas, are helping drive the current boom in the Dallas economy. Dallas ranked No. 2 overall in *Forbes'* 2019 ranking of "The Best Places for Business and Careers."

The Dallas-Fort Worth metropolitan area has one of the largest concentrations of corporate headquarters for publicly traded companies in the United States. *Fortune* magazine's 2022 annual list of the Fortune 500 in America includes 23 companies located in Dallas-Fort Worth.

Dallas-Fort Worth is one of only a few metro areas to have teams in six major professional sports leagues: the [Dallas Cowboys](#) of the NFL, baseball's [Texas Rangers](#), the [Dallas Mavericks](#) of the NBA, the [Dallas Stars](#) of the NHL, and professional soccer's [FC Dallas](#), and [Dallas Sidekicks](#). Throw in the [Mesquite Championship Rodeo](#),

[Texas Motor Speedway](#), ample golf courses, and NCAA Division I athletics, and you can see that Dallas-Fort Worth is a community that likes its sports. Fort Worth also hosts many national equestrian cutting horse competitions, including the Fort Worth Stock Show & Rodeo.

This rich Western agricultural and sports heritage is complemented by a sophisticated dedication to the arts. The Dallas Arts District, located on the north side of downtown and covering 118 acres, is the largest such urban district in the United States. The [AT&T Performing Arts Center](#), the [Dallas Museum of Art](#), and the Morton H. Meyerson Symphony Center are among the most prominent features of the Dallas arts scene. Nearby is the [Perot Museum of Nature and Science](#). [Fair Park](#) is where you'll find the annual [State Fair of Texas](#), as well as the Cotton Bowl Stadium, theater and concert venues, and the African American Museum of Dallas.

Fort Worth's 2,056-seat [Bass Performance Hall](#) hosts Van Cliburn International Piano Competition performances, the Fort Worth Symphony, the Fort Worth Opera, and musicals presented by Casa Mañana. Fort Worth's museums are nationally respected and include the [Modern Art Museum of Fort Worth](#), the [Amon Carter Museum of American Art](#), the [Kimbell Art Museum](#), and the [Fort Worth Museum of Science and History](#).

Throughout Dallas-Fort Worth, you will find an amazing blend of artistic expressions that reflect the multicultural dynamics of the city's heritage.

Other activities in the Dallas-Fort Worth area include historical sites, the [Fort Worth Botanic Gardens](#), [Dallas Arboretum](#), the [Dallas Zoo](#), [Fort Worth Zoo](#), and wildlife centers where you can experience the wonders of nature. [Six Flags Over Texas](#) has the tallest roller coasters, the best shows in the Southwest, and plenty of fun places to relax and enjoy the warm Texas climate. Dallas has more shopping centers per capita than any other major U.S. city and four times more restaurants per person than New York City.

For more information, please visit visitdallas.com.

Procedure for Candidacy

All applications, nominations, and inquiries are invited. Applications will be confidential and should include, as separate documents, a CV/resume and a letter of interest. Review of applications has begun and will continue until the position is filled.

Please direct all applications, nominations, and inquiries to the WittKieffer consultants Jeff Schroetlin, Megan Welch, and Lyndsey Nicodem, who are assisting UT Southwestern Medical Center with this recruitment, preferably via e-mail at UTSWChildPsychiatry@wittkieffer.com.

UT Southwestern Medical Center is committed to an educational and working environment that provides equal opportunity to all members of the University community. As an equal opportunity employer, UT Southwestern prohibits unlawful discrimination, including discrimination on the basis of race, color, religion, national origin, sex, sexual orientation, gender identity, gender expression, age, disability, genetic information, citizenship status, or veteran status.

The material presented in this leadership profile should be relied on for informational purposes only. This material has been copied, compiled, or quoted in part from UT Southwestern Medical Center documents and personal interviews and is believed to be reliable. While every effort has been made to ensure the accuracy of this information, the original source documents and factual situations govern.

All images and logos used in this leadership profile were attained from UT Southwestern Medical Center and/or are owned by Witt/Kieffer Inc. via Getty Images.



WittKieffer is the premier executive search and advisory firm developing inclusive, impactful leadership teams for organizations that improve quality of life. For more than 50 years, we have operated exclusively at the intersection of not-for-profit and for-profit healthcare delivery, science, and education – the Quality of Life Ecosystem. Through our expert executive search services as well as our Professional Search, Interim Leadership, and Leadership Advisory solutions, we strengthen organizations that make the world better.

Visit [WittKieffer.com](https://www.WittKieffer.com) to learn more.

WittKieffer